

MAKING DETAIL BOX



Start with the detail gouge tool to face off the blank.



The detail gouge to start hollowing out the bottom of the lid.



The scraper to clean up the bottom of the lid.



The berdane to form the tenon on the bottom of the lid.



Parting tool to cut the lid thickness.



Detail gouge to shape the lid.



Parting to cut lid off.



Skew to mark the diameter of the tenon.



Detail gouge to start hollowing.



Scraper to finish hollowing.



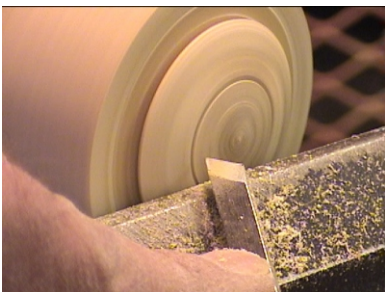
Berdan to for rim.



Detail gouge to round off lid.



Detail tool to cut texture into lid.



Skew to highlight the texture band.



Berdan to make lid fit easily.



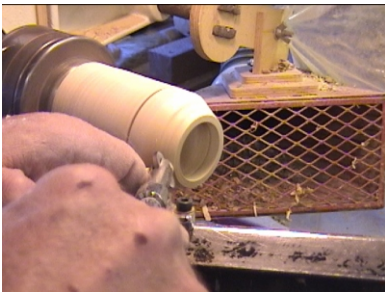
Caliper to measure depth of hollow.



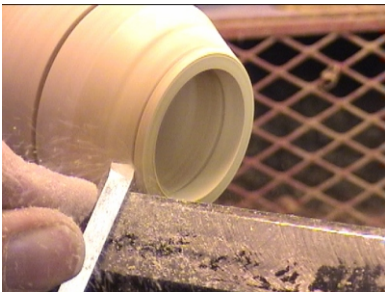
Parting tool to mark depth of box bottom.



Detail gouge to round off outside of box.



Detail tool to texture.



Skew to highlight band of texture.



Detail gouge to finish shaping box.



Parting tool to cut box off the blank.



Carving tool to cut nib off bottom of box.