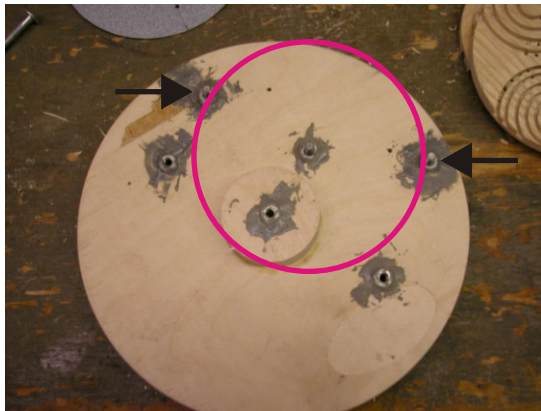
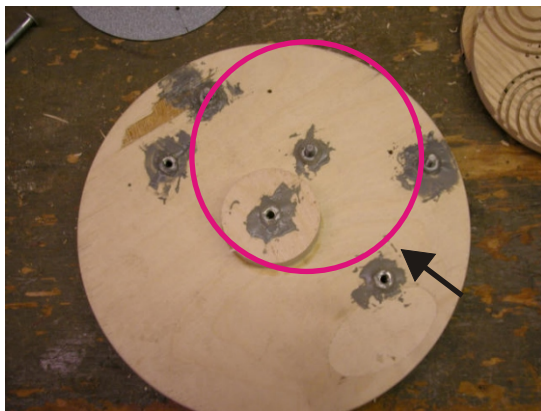


I cut my disc 4 1/2" in diameter. Drill the center hole. Then where the arrows are I just drilled the holes so the bolt was outside the disc. They are in line with the center hole because the wood normally bows up on the side because of the grain. A bolt on each side like this holds the disc flat on the backer board.



Then I just moved the disc out a ways and drilled a center hole to mount. Then the two hold down bolts placed on the edge like the center one above describes.



Then I drew the line on the backer to line up the marks I placed on the edge of the disc. Line up the line and bolt the disc down, cut one set of circles then loosen the bolts and rotate the disc to the next mark and tighten the bolts. Cut the next set of circles. Then do it again for the 3 set of circles.